



NEWSLETTER

NAGALAND FOREST MANAGEMENT PROJECT

Issue No. III Volume II July 2020 - September 2020



From the Desk:

This particular Quarter i.e., July-September 2020 has been very important for the project as the most crucial intervention in form of plantation was scheduled to take place. Knowing of the event and the situation arising due to Covid-19 Pandemic and various safeguard measures taken thereafter, have put a grave challenge.

It is really heartening to note that notwithstanding the challenges, our field officials and JFMC members rose to the occasion and successfully accomplished the task. This achievement signifies the dedication and sincerity of all stakeholders towards the project. Not only that many online training programs were organised for the first time during this quarter. I sincerely extend my gratitude to Project Management Consultants for timely interaction with concerned stakeholders.

I am thankful to the members of PMU and DMUs Head for monitoring the progress of the project effectively and taking appropriate action. Looking forward for more success in time to come.

*Shri Dharmendra Prakash, IFS
Chief Project Director,
Nagaland Forest Management Project*



Meetings via Video Conference

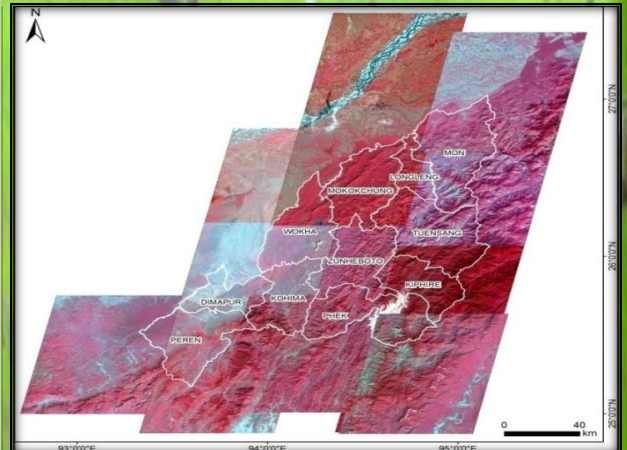
PMU Meetings:

The Project Management Unit (PMU) had regular meetings to discuss and decide on various issues relating to the project.

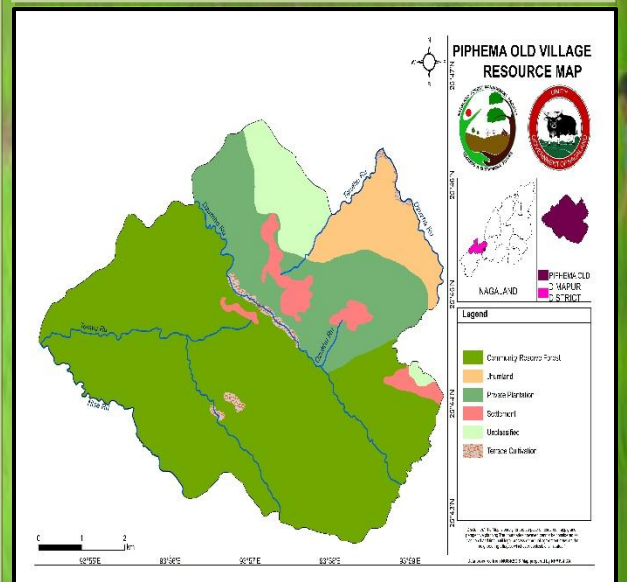
Apart from the ongoing Video conferencing on the regular activity updates from the DMUs, a knowledge sharing program on Jhum themed ***“An inhouse capacity development program for sharing of experiences and knowledge on Jhum cultivation in Nagaland”*** was conducted by the PMU through VC from 27th -28th July 2020. The program stressed on various Jhumming practices in the State, experiences of NEPED project in Nagaland, understanding of the NFMP project in the light of the implementation of the various Forestry Modules, etc.

GIS Cell Activities at a glance

- Established communication with National Remote Sensing Center for procurement of LISS IV and Cartosat 1 Imagery.
- Established communication with Directorate of Soil and Water Conservation for sharing of meteorological data.
- Reviewed the draft prepared by Project Management Consultants (PMC) regarding 'Guidelines for forest land management, planning and monitoring through remote sensing and GIS, GPS survey and demarcation'.
- Preparation of Social and Village Resource Maps (Micro-plan) for Piphema Old and Pherima A villages.
- Completion of layer stacking of NRSC LISS IV Satellite data.
- Geo-referencing of mineral and geological map of Nagaland.
- Communication and Procurement of micro watershed data from Land Resources Department completed.
- Communication and Procurement of Forest cover Map (ISFR, 2019) completed.
- Preparation and distribution of Pre-field maps to all the divisions.
- Generation of Built-up boundary for Batch-1 villages.
- Generation of Built-up boundary for Batch-II villages.
- Generation of road layers contained within the Built-up area for Batch-II villages.
- Finalization of village boundary for Salulamang (Batch II, Mokokchung).
- Communication of data with Kiphire Division for finalization of boundary for Keor, Bilongkyu and Risithsi villages (Batch II).
- Rectification of Zhadima 'A' intervention models.
- Rectification of Nsunyu treatment models.



Cloud free LISS IV satellite image covering the entire state of Nagaland. Acquisition year 2019-2020. months between October –April



Resource Map of Piphema Old Village

Preparation of Micro Plan



DMU Phek: Meluri Village



DMU Phek: Khumiasu Village



DMU Tuensang: Waphur Village



DMU Tuensang: Kuthur Village



DMU Dimapur: Piphema Old Village



DMU Mon: Wakchinga Village



DMU Mon: Chi Village



DMU Mokokchung: Yaongyimsen

Preparation of Micro Plan



DMU Mokokchung: Merangkong village



DMU Mokokchung: Chakpa village



DMU Mokokchung: Salulamang



DMU Mokokchung: Sungratsu village



DMU Mokokchung: Salulamang village



DMU Mon: Tanhai Village



DMU Mon: Tumei Village



DMU Mon: T. Chingnyu

Prior Information Consent

DMU Peren:

The Tening Range Officer and Staff on 29th July 2020 held a meeting with the Batch-II Villages under FMU Tening namely Nzau village; the meeting was attended by the Village Council Chairman and elders of the village. The FMU Tening on obtaining the Prior Information Consent (PIC) and Memorandum of Understanding (MoU) forms started the micro planning work and house to house data collection was initiated.



Annual Review Meeting

DMU Phek:

Annual review Meeting of DMU Phek was held on 6th July at the DFO cum DMU office. ACF cum ADMU addressed the gathering with attendees from the Batch 1 JFMC members and FMU Heads and staffs. DFO cum DMU head Shri Velatso Demo gave a detailed overview of the project. He complimented the JFMCs for successfully maintaining the nurseries and completing all the necessary works on time.



Capacity Building Programme

DMU Mon:

Capacity building Programme was conducted in Batch II villages for the microplan preparation team. NFMP staffs visited the Batch II villages in order to help JFMCs of all villages to start with the Microplan preparation work.



T. Chingnyu Village



Chi Village



Online Training of Trainers (ToT)

Training of Trainers: A Two day Online Training programme was organised by Project Management Unit via Video Conference on the topic “JFMC Training of Trainers” on 15-16th July 2020 and attended by all the DMUHead’s, FMU Heads, Supporting staff and FMU field staff.



DMU Mokokchung



DMU Mon



DMU Tuensang



DMU Wokha



DMU Longleng

Training on Village Mapping

DMU Dimapur: The FMU Head Piphema along with the JFMC Chairmen of Piphema Old Village & Pherima ‘A’ Village visited the GIS Cell at PMU office Kohima for training on mapping of Village area for Micro Plan for Batch II Villages

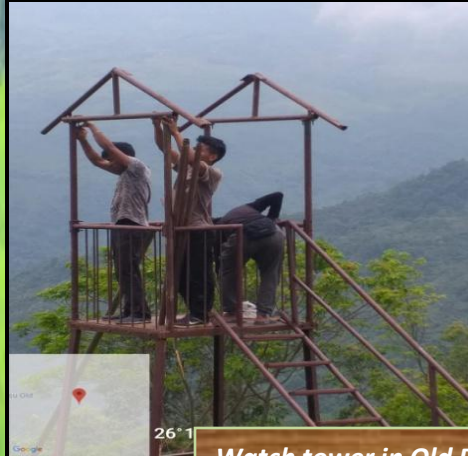


Water Harvesting Structures & Entry Point Activities

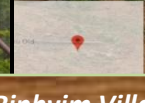


Latitude: 25.75915
Longitude: 94.95322

Water Harvesting Structure Zhadima 'A' Village (Under Construction)



26°1



94°15'44.19104"E
Wokha

Watch tower in Old Riphym Village (EPA)



Latitude: 25.61213
Longitude: 94.623823
Elevation: 1563.85 m
Accuracy: 2.0 m
Azimuth: 175° (S)
Pitch: -1.0° (0.6°)
Time: 09-03-2020 11:20
Note: nursery Lephori.

Community participation for Construction of Drainage under EPA at Lephori village



Latitude: 26.342557
Longitude: 94.681229
Elevation: 553.88m
Accuracy: 2.5m
Time: 18-07-2020 13:13
Note: Culvert (EPA) yimrup under NFMP

DMU head and Assistant DMU head inspecting the construction of Culvert(Entry Point Activity) of Yimrup village under FMU Tuensang

Initiative of raising Nursery



DMU Zunheboto:

The nurseries of the Emlo and Yesheluto villages are augmented by each household also raising few saplings in assistance. Polybags were earlier distributed by JFMC members to these households to raise the saplings. The villagers in return will get payment for ensuring survival of the raised saplings.

Plantation



Transplantation of saplings to poly bags at Hekheshe Village Nursery



JFMC Members of Medziphema Village clearing the brushwood at JCC Model



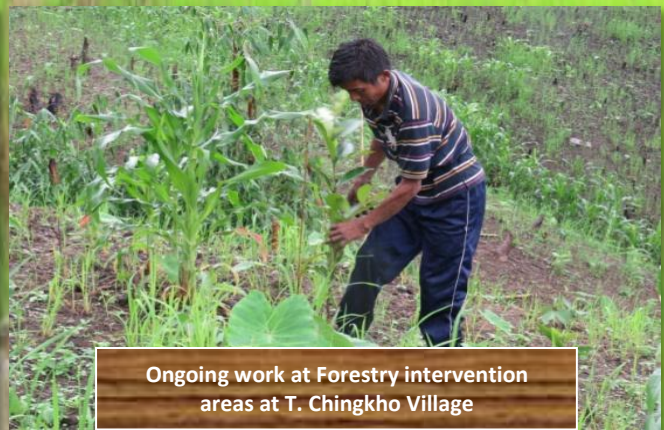
Community Participation at Lephori Village during the JAF and PEC plantation



JAF Model Plantation at Lephori Village



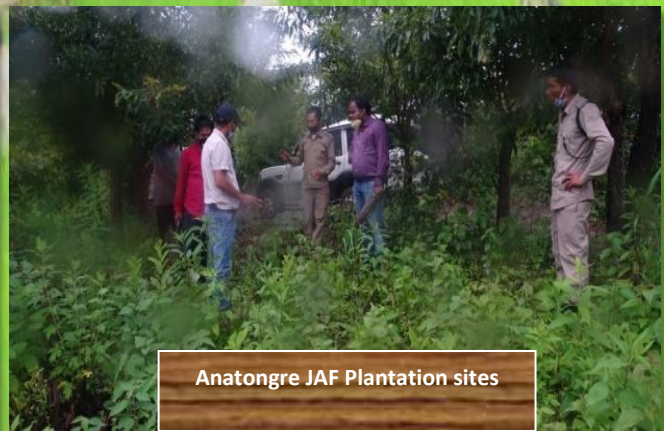
Plantation drives at Anatongre JCC model



Ongoing work at Forestry intervention areas at T. Chingkho Village



JCF jungle clearance for plantation at Noksen, FMU Tuensang



Anatongre JAF Plantation sites

Plantation



JCC Model Old Riphymvillage



Protection and expansion of CCA at Kami village



JCC Model site at Nsunyu village



Preparing the Bamboo sticks for plantation works at PEC Model Medziphema



JCC Model site Changtongya New Village



JFF Model site Old Riphym Village



JAF Model site Nsunyu village



JFF Model site Mongsenyimti Village

Field Visits/ Inspection

Joint field visit by DMU Zunheboto & DMU Mokokchung:

A joint field visit was conducted on 22nd July 2020 at Emlo and Yesheluto villages under Atoizu Beat, Zunheboto by Dr. Sentitula IFS, DFO Zunheboto & DFO Mokokchung, along with the FMU Head Shri Bokato, JFMC members including a few villagers. Both DMU staffs of Zunheboto and Mokochung were part of the field visit. Such a joint visit facilitated interaction between the DMU staff's of the two units and promoted cross learning.



DMU Kohima:

DFO Kohima cum DMU Head Shri Rajkumar M., IFS and support staff visited Nsunyu village on 16th July to monitor the plantation activities in JAF and JCC Model areas. The DFO reminded the village members that if this project is implemented properly, it will benefit the entire village. He called upon the members to meet this month and decide which areas to take up for next year's plantation. He also stressed that the entire work is not departmental alone, but the work is done by the society and hoped that the JFMC and the entire village benefits.



DMU Wokha:

On 23th July 2020, Smti. Zuthunglo Patton IFS, DFO cum DMU Head with field staff and support staff inspected the EPA's each model sites at Old Riphym village and New Riphym village. It was found that almost all plantation works have been completed in both the villages in each models, except for JCF and JCC model in Old Riphym Village is yet to be completed due to the presence of Elephants and PEC in New Riphym village.



DMU Zunheboto:

Dr. Sentitula IFS, DFO Zunheboto conducted an inspection of all the models of Mishilimi Village, Pughoboto range along with Shri Tokugha, DCF, Shri Kihoto, RFO and Division staff on 5th Sep 2020. A discussion and feedback meeting were conducted soon after by Dr Sentitula in presence of staff and JFMC members. The JFMC members highlighted the grievances to the DMU team.



Field Visits/ Inspection

DMU Mokokchung:

DMU Head along with Supporting Staff visited the Changtongya New village Models – JFF, JCF & PEC on 13th July, Mongsenyimti village Models – JAF, JCC & PEC on 17th July, Mopungchuket village Models – JCC & PEC on 20th July and inspected the plantation site area.



Changtongya New village



Mongsenyimti



Mopungchuket

DMU Mon:

On the 28th of August DMU staffs visited Wanching village for Project Review with the JFMCs and ongoing works under NFMP. The DMU staffs also identified some issues faced by the JFMCs throughout the Batch I villages, where JFMC members being unaware of their roles and responsibilities under the project and its implementation find it hard to navigate the project. Therefore, according to the TOT provided by the PMU during the month of July, DMU staffs visited the Mon Village JFMCs to create awareness on JFMCs roles, responsibilities and functions



DMU Staffs reviewing the work progress and clarifying doubts & questions regarding project at Wanching village



Distribution of Kuroiler chicks & feeds to Changtongya New, Mopungchuket and Mongsenyimti JFMC



Installation of Automatic Hand Sanitizer at DMU Office Phek



Installation of Automatic Hand Sanitizer and Non-Contact Thermometer at PMU Office Kohima



EDITORIAL BOARD:

- 1) Shri Supongnukshi, IFS
Project Director (HRD), NFMP
- 2) Smt. Lhinghoikim Touthang, IFS
Dy. Project Director (DP & R)
- 3) Shri Onokehie Soleho
Support Staff (PMU)

Contact Address:

O/O The Nagaland Forest Management Project Society
Forest Office Complex
Ground Floor
New Minister's Hill, Kohima
Nagaland-797001

[Email-projectdirector_hrd@nfmpjica.org](mailto:projectdirector_hrd@nfmpjica.org)

www.nfmpjica.org